

## 9.00 - 10.00 REGISTRATION

## Sala del Portego - Plenary

10.00 - 11.00

**Representatives of Venice Water Authority, Veneto Region, Municipality of Venice, local Universities, UNESCO Venice Office.**

11.00 - 12.30

Chairman: *dr. P. Campostrini*

**The European Union, the European Space Policy and the end-user.** *Dr. M. Praet* - Cabinet of the President of the European Council; Advisor for research, development, innovation, information society, space and cultural policies.

**ESA's Earth Observation programmes and applications.** *Dr. V. Liebig* - Director - European Space Agency - ESA.

**Uno sguardo dal cielo in caso di disastro.**

*Dr. E. Saggese* - President - Italian Space Agency - ASI.

**EGNOS and Galileo, driving the GNSS applications to the future.** *Dr. C. Des Dorides* - Executive Director European GNSS Agency.

## 12.30 - 14.00 LUNCH

14.00 - 15.30

Chairman: *dr. P. Campostrini*

**The European Earth Observation Programme (GMES): from Research to Operations.** *Dr. M. Facchini* - Deputy Head of Unit - European Commission - DG Enterprise and Industry - GMES Bureau.

**Ensuring security whilst keeping access : principles of security for the European space tools.** *Dr. C. Claeys* - Head of the Unit security of space tools - EU Joint Situation Centre European External Action Service.

**Title Intermediate and End Users in GMES: an Italian perspective.** *Prof. B. De Bernardinis* - President - ISPRA Italian Institute for Environmental Protection and Research.

## 15.30 - 16.00 COFFEE BREAK

## Sala del Portego - Parallel Session

16.00 - 17.40

**Section 1: EU initiatives, directives and programs for integrated usage of geographical and satellite data.**

Chairman: *dr. M. Scalet.*

**EuroGEOSS: The Initial Operating Capacity.** *Stefano Nativi, Max Craglia, Lorenzino Vaccari, Paolo Mazzetti.*

**Accessing long term monitoring data as ground truth – contribution from EnvEurope.** *Johannes Peterseil, Herbert Schentz, Paola Carrara, Alessandro Oggioni.*

**GMES byogeophysical products validation with long-term ground-truth data from ENVEUROPE network of sites.** *Ricardo Díaz-Delgado, Mark Frenzel, Alessandra Pugnetti, Alessandro Campanaro.*

**Operational evaluation of damages in flooded areas integrating Cosmo-skymed and geographical data.**

*Giorgio Boni, Elena Angiati, Laura Candela, Fabio Castelli, Silvana Dellepiane, Fabio Delogu, Michaela Demartino, Matteo Fiorini, Gabriele Moser, Nazzareno Pierdicca, Fabio Pintus, Luca Pulvirenti, Roberto Rudari, Sebastiano B. Serpico, Stefania Traverso, Cosimo Versace.*

**Interoperability of spatial data to better sustain the implementation of environmental policies in the European Union.** *Vanessa Passoni.*

## Sala Giardino - Parallel Session

16.00 - 17.40

**Section 4: Applications, themes and research - new concepts.**

Chairman: *dr. P. Carrara.*

**Generation of a digital elevation model of the Wadi Lebda Basin, Leptis magna - Lybia.** *Matteo Ombrelli, Cesar Urrutia, Walter Calessio, Andrea Bondi, Paolo Telaroli, Irene D'Urso, Luisa Sterponi.*

**Co-utilisation of GMES and GNSS data experiences efficient real time traffic management system.** *Matteo Andre Perpey, Cazaux Elodie.*

**A user driven approach for a satellite data based near-realtime observing system at local/regional scale.**

*Christian Steurer, Claudia Notarnicola, Roberto Monsorno, Anke Tetzlaff, Armin Costa, Luca Irsara, Marc Zebisch.*

**The some new satellite geosensing opportunities for investigation of natural disasters.** *Andrey Kharitonov, Galina Kharitonova, Elisaveta Alesheva.*

**Satellite Watching for long-term modeling of fluvial morphodynamics.** *Michael Nones, Mariateresa Franzoia, Giampaolo Di Silvio.*

## Sala Alta - Parallel Session

16.00 - 17.40

**Section 2: The role of EU regions and regional end users for exploitation of space data.**

Chairman: *dr. R. Ayazi.*

**Real Time, GNSS based Positioning Service of the Regione Veneto.** *Maurizio De Gennaro, Aldo Marolla, Antonio Zampieri, Alessandro Caporali.*

**Scenes and Scenarios: joining observations, cartography and physics to move from single frames to forecast of risk scenarios.** *Giorgio Boni, Fabio Castelli, Laura Candela, Roberto Rudari, Franco Siccardi, Cosimo Versace.*

**The SDI: a knowledge based system.** *Maurizio De Gennaro, Silvano De Zorzi, Aldo Marolla, Massimo Foccardi.*

**Optical and SAR data for crop and water balance estimation at regional level.** *Andrea Spisni, Claudia Notarnicola, William Pratzzoli, Giulia Villani, Vittorio Marletto.*

**Integration of the Atlas of historical cadastres and topographic maps with space and other source data for water courses identification and analysis in an SDI framework.** *Branka Cuca, Raffaella Brumana, Anna Rampini, Daniela Oreni, Fabio Grassani.*

## 19.30 CONCERT FRARI'S CHURCH

## 8.30 - 9.30 REGISTRATION

## Sala del Portego - Plenary

9.30 - 11.00

Chairman: *dr. M. Seifert*

**NEREUS - spreading the use of space technologies on Earth for the benefits of regions and their citizens.** *Dr. R. Ayazi* - NEREUS aisbl, Secretary General.

**The Role of OGC Web Service Standards in EO Market Growth.** *Steven Ramage* - Executive Director - Open Geospatial Consortium (OGC).

**Evolving Institutional SDI's to interoperate with crowd-sourced and informal data sources.** *Prof. M. Jackson* - Director Centre for Geospatial Science The University of Nottingham.

**The development of the territorial information according to the European and National directives.** *Dr. M. De Gennaro* - Director Project Unit for the Geographical Information System and the Cartography, Regional Secretary for the Infrastructure, Veneto Region.

## 11.00 - 11.30 COFFEE BREAK

## Sala del Portego - Parallel Session

11.30 - 13.10

**Section 3: Data interoperability, including space information: goals, successes and problems.**

Chairman: *dr. S. Nativi.*

**Study of mesocale convective clouds formation from satellite's data analysis.** *Francesco Cristiano, Stefano Fava, Pedro Arnau, Eugenio Oñate.*

**A new perspective for Earth observation missions: towards really operational applications in the areas of agriculture and environment.** *Dedieu Gérard, Agolle Olivier.*

**Spatio-temporal modeling and remote sensing for a common European air quality assessment method.** *Alessandro Fassò, Francesco Finazzi.*

**Contributions of Satellite Remote Sensing to Specify Changes of the Ecological Situation: Monitoring of Urban Indices.** *Leilah Haag, Annett Frick, Gregor Weyer, Hartmut Kenneweg.*

**From interoperability to knowledge discovery using large model datasets in the marine environment: the THREDDS Data Server example.** *Andrea Bergamasco, Sandro Carniel, Mauro Sclavo, Tiziano Minuzzo.*

## Sala Giardino - Parallel Session

11.30 - 13.10

**Section 4: Applications, themes and research - new concepts.**

Chairman: *dr. A. Caporali.*

**A real time Context-Aware Mobile GIS for Urban Property Survey Data Acquisition.** *Zeinab Fazli, Mahmoud Reza Delavar, Mohammad Reza Delavar.*

**Collaborative Interoperable Geographic Node in**

**Venice Lagoon.** *Andrea Rosina, Alessandro Bergamasco, Stefano Guerzoni, Emanule Masiero, Stefano Menegon, Matteo Morgantini, Alessandro Sarretta, Andrea Vianello.*

**Global data interoperability.** *Ezio Arlati, Mauro Langfelder, Edoardo Zanaboni.*

**Optimization of the processing of time series of different Satellite Imagery.** *Alfred L. de Jager.*

**Digital elevation models of SR: quality measures and metadata.** *Eva Mičietová, Juraj Vališ, Martin Iring, Radoslav Chudý.*

## 13.10 - 14.20 LUNCH

## Sala del Portego - Parallel Session

14.20 - 16.00

**Section 3: Data interoperability, including space information: goals, successes and problems.**

Chairman: *dr. R. Longhorn.*

**A Bottom Up Approach to Downstream Service Development: The G-STEP Experience.** *Samuel Almond, Kavitha Muthu.*

**Spatial Data Infrastructure and Geospatial web services approach for irrigation decision tools.** *Salwa Belaqziz, Michel Le Page, Vincent Simonneaux, Lionel Jarlan, Laurent Drapeau, Hakim Kharrou, Benoît Duchemin, Ghani Chehbouni.*

**A Semantic Augmentation Discovery Framework.** *Mattia Santoro, Paolo Mazzetti, Cristiano Fugazza, Stefano Nativi, Massimo Craglia.*

**OGC Web Services in the workflow of a research Institute dealing with Remote Sensing data.** *Laura Criscuolo, Monica Pepe, Simone Lella, Paola Carrara.*

**Online GNSS service with scalable positioning accuracy.** *Jürgen Alberding, Jens Wickert.*

## Sala Giardino - Parallel Session

14.20 - 16.00

**Section 4: Applications, themes and research - new concepts.**

Chairman: *dr. R. Juliao.*

**A wrapper class dependent feature selection using Genetic Algorithms for hyperspectral image classification.** *Nasehe Jamshidpour, Saeid Homayouni, Farhad Samadzadegan.*

**Very high resolution thematic maps from aerospace for regional and provincial urban planning.** *Giovanni Sylos Labini, Cristoforo Abbattista.*

**A water resources management tool: 10 years of integration of satellite remote sensing and geographical information systems.** *Xavier Pons, Pere Serra, Jordi Cristóbal, Cristina Cea, Cristina Domingo, Paula Díaz, Anna Riverola, Manel Monterde, Enrique Velasco.*

**PEEP-HOLE: a constellation of small Earth Observation satellites aiming at new applications and customers.** *Daniel Hernandez, Bénédicte Escudier, Fernando Gonzalez, Olivier Pavlin.*



Tuesday, 22nd March 2011

16.00 - 16.30 COFFEE BREAK

Sala del Portego - Parallel Session

16.30 - 17.30

Section 3: Data interoperability, including space information: goals, successes and problems.

Chairman: dr. R. Longhorn.

Performance of standardized web map server for remote sensing imagery. Joan Masó, Paula Díaz, Xavier Pons.

Emerging Standards for Geospatial Distributed Computing Infrastructures. Craig Lee, George Percivall.

Novel Techniques for a Cooperative Positioning Approach Based on Peer-to-Peer Networks. Letizia Lo Presti, Davide Margaria, Marco Rao.

Sala Giardino - Parallel Session

16.30 - 17.30

Section 4: Applications, themes and research - new concepts.

Chairman: dr. R. Juliao.

Processing Reflected GPS Signals with Software Receivers for Remote Sensing Applications. Gianluca Falco, Manuela Cucca, Marco Pini, Riccardo Notarpietro, Letizia Lo Presti.

CNR-ISMAR contribution in the FIELD\_AC project: the Gulf of Venice study case. Alvise Benetazzo, Andrea Bergamasco, Sandro Carniel, Mauro Sclavo.

New technologies and EO sensor data build up knowledge for a Smart City. Giovanni Borgia, Rina Camporese, Luigi Di Prinzio, Niccolò Iandelli, Stefano Picchio, Antonella Ragnoli.

19.00 GALA DINNER Hotel Monaco & Grand Canal

Wednesday, 23rd March 2011

8.30 - 9.30 REGISTRATION

Sala del Portego - Plenary

9.30 - 11.00

Chairman: tbc

GIS4EU: Provision of interoperable datasets to open GI to EU Communities. Dr. Stefania De Zorzi - Corila.

From Data to Action - The role of Spatial Data Infrastructures. Prof. Rui Pedro Juliao - Deputy Director-General - Instituto Geografico Portugues.

Coastal areas monitoring and safeguard: a technical and strategic approach using different sources and resources. Dr. Roberto Rosselli - Venice Water Authority.

Coastgis 2011. Dr. Roger Longhorn - EUCC and Corila representative.

11.00 - 11.30 COFFEE BREAK

Sala del Portego - Parallel Session

11.30 - 13.10

Section 1: EU initiatives, directives and programs for integrated usage of geographical and satellite data.

Chairman: dr. R. Longhorn.

From collaborative projects to practical implementation of INSPIRE and GMES guide lines. Alessandra Benvenuti, Roberto Piuzeo, Fabio Crosilla, Alberto Beinat.

EUMETSAT EOPortal's Provision to GMES, INSPIRE and GEOSS. Uwe Voges, Michael Schick, Udo Einspanier.

GENESIS, a flexible solution for building a network of collaborative environmental services. Christian ALEGRE, Simone Gianfranceschi, Steven Smolders.

A Spatial Decision Support System (SDSS) for real-time coastal and environmental management. The potential role of NatureSDI+ Geoportal. Andrea Fiduccia, Francesco Immordino.

Sala Giardino - Parallel Session

11.30 - 13.10

Section 4: Applications, themes and research - new concepts.

Chairman: dr. Silvano De Zorzi.

Horizon distributes virtual reality. Pedro Branco, Filipa Coutinho, Sara Barroso.

Applying geospatial standards to sensor-based transport infrastructures monitoring. Lorenzo Bigagli, Stefano Nativi, Mattia Santoro, Enrico Boldrini, Fabrizio Papeschi.

Data integration from ground and space sources. Silvio De Colle, Alberto Grava, Stefania De Zorzi.

Snowmelt Runoff Modeling Improvement via Parameters Calibration Using Genetic Algorithms. Nastaran Saberi, Saeid Homayouni, Nasehe jamshidpour.

On-Line Production of Structured Spatial Data for GIS

through Photogrammetry. Mehdi Maboudi, Shirin Malihi, Hamid Ebadi, Farshid Farnood Ahmadi.

13.10 - 14.10 LUNCH

Sala del Portego

14.10 - 16.00

Section 2: The role of EU regions and regional end users for exploitation of space data.

Chairman: dr. Stefania De Zorzi.

Possible contributions of Brandenburg to European space-borne programmes in the field of monitoring changes of the environment. Hartmut Kenneweg, Peter A. Hecker.

The Living Lab approach for the development of space applications: lessons learned from the RITA project. Dedieu Gérard, Thumerel Bernard, Sánchez Albor Rosario, Lobo Agustin, Dejoux Jean-François, Schwartz Hélène, Menaut Jean-Claude, Boucherie Olivier, Bert Rudolphe.

Exploitation of historical satellite SAR archives for mapping and monitoring landslides at regional and local scale. Alessandro Ferretti, Andrea Tamburini, Marco Bianchi, Massimo Broccolato, Davide Carlo Guido Martelli.

Urban Atlas: from a EU funded project towards a land use map in support to local land planning and monitoring. Claudio La Mantia, Anna Maria Deflorio, Daniela Iasillo.

Geo-Services using earth observation (EO) and Ancillary data in prevention of Seveso Directive: 3WSA PROJECT (Wallonia World Wide Space Applications). Nathalie Stéphenne, Aurore Brunson, Michael Hansroul, Nicolas Dosselaere Vladimir E. Fortov, Adnan D. Khamzaev, Grigory E. Ordjonikidze.

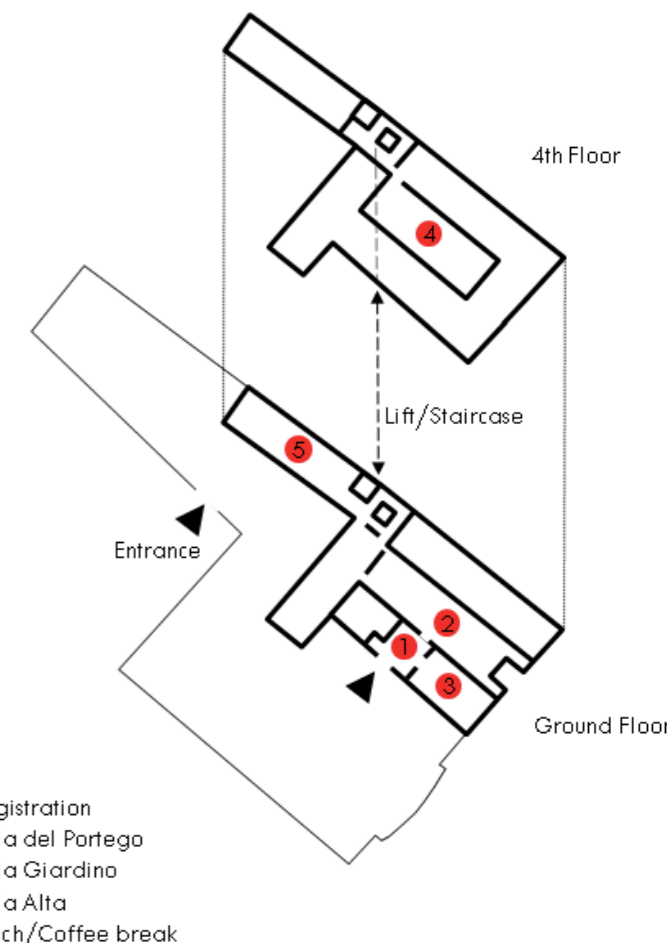
A web service-based tool to disseminate satellite-derived water quality maps of Lake Garda. Simone Lella, Mariano Bresciani, Claudia Giardino, Alba L'Astorina.

16.10 - 17.30 ROUND TABLE

17.30 - 18.30 CLOSING COCKTAIL



CORILA
Palazzo Franchetti
San Marco 2847
30124 Venice Italy
tel. +39.041.2402511
fax +39.041.2402512
congress.secretariat@corila.it
www.corila.it



Data Flow FROM SPACE TO EARTH Applications and interoperability

INTERNATIONAL CONFERENCE

Venice, Italy, 21-23 March 2011
Istituto Veneto di Scienze Lettere ed Arti
Palazzo Franchetti, San Marco 2847

Programme

